



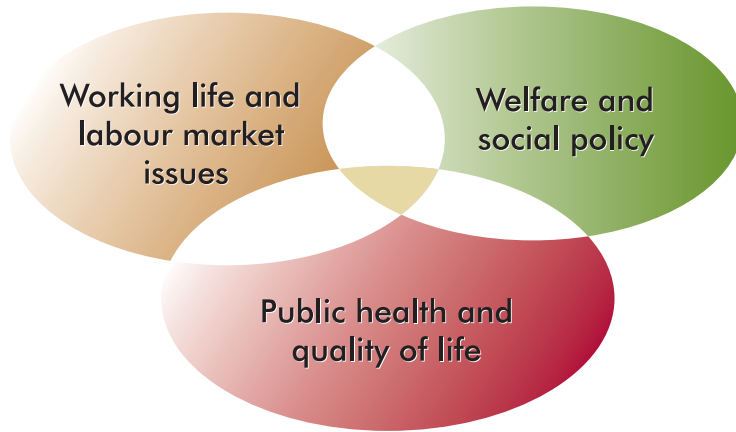
BRIEF FACTS

about the
Swedish Council for Working Life
and Social Research (FAS)



SWEDISH COUNCIL FOR WORKING LIFE
AND SOCIAL RESEARCH

The Swedish Council for Working Life and Social Research (FAS)

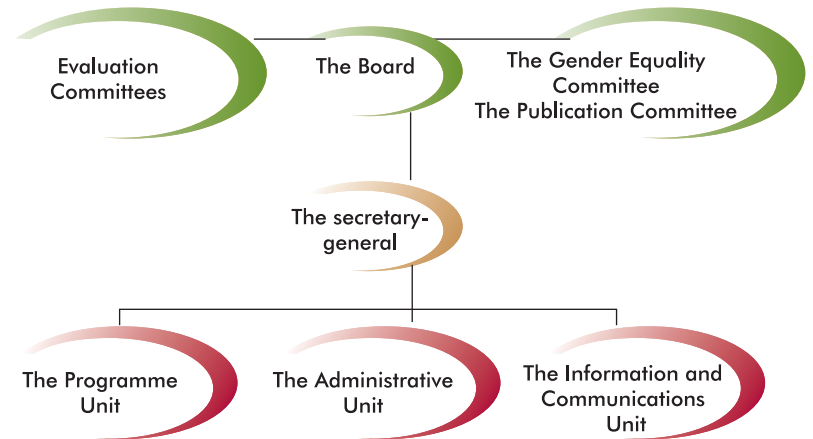


FAS has a research budget of around SKr300 million to distribute every year.



Organisation and resources

Some twenty people work at the Council's Secretariat in Stockholm. The activities are led by the secretary-general with the active involvement of the researchers and representatives of the public interest on the Board and its committees. The Secretariat is tasked, among other things, with assisting the Council's evaluation committees, the administration of grants and the dissemination of information and transfer of knowledge. The Secretariat also commissions analyses and evaluations of the research performed within FAS's area of responsibility. The activities are carried out in collaboration with other research funding agencies at both national and international level.





Tasks

The Council's main tasks include:

- allocating funds to research
- evaluating the research performed in the Council's area of responsibility
- identifying important research needs and formulating research programmes in consultation with other research-funding agencies
- efforts to ensure that research results are made available, tested and discussed in a variety of contexts
- promoting national and international collaboration and exchange within the research community
- encouraging multidisciplinary and interdisciplinary research
- improving the opportunities to pursue research careers for younger researchers
- promoting equality between the sexes within research
- promoting dissemination of knowledge through scientific publication and dialogue between researchers, policy makers and practitioners.



Main areas of research funding

All working life and social research deals with various aspects of human life. FAS supports research in the following main areas:

- Work and health
- Work organisation
- Labour market issues
- Public health
- Welfare and social policy
- Social services and social relations.

National co-ordination

FAS is responsible for co-ordinating Swedish research concerning:

- Disabilities
- International migration and ethnic relations (IMER)
- The elderly
- Social science aspects of alcohol research
- Children and youth.

FAS also monitors research relating to electromagnetic fields and hypersensitivity to electricity and complementary and alternative medicine.



Funding instruments

FAS uses a variety of funding instruments in order to promote and encourage research, internationalisation and the dissemination of knowledge.

Research

Project grants
Programme grants
Research positions
Post-doc awards
Centres of excellence

Dissemination of knowledge

Networks
Conferences/symposia
Publication grants

Internationalisation

Travel grants
Scholarships for research and post-doc studies abroad
Grants for visiting researchers



Research information and interaction with society

FAS makes active efforts to disseminate knowledge and encourage dialogue through:

- The website and linked portals
- Newsletters
- Reports and popular science overviews
- Conferences and seminars
- Press contacts

For more information on FAS and on research funded by FAS visit our website www.fas.se.



International

FAS supports and stimulates international collaboration by, among other things, providing funding for international activities and information in English on the research funded. Employing the services of international experts for evaluations etc. is another important way to promote international contacts.

FAS is a member of the European Science Foundation and is also part of other networks of research-funding agencies. FAS is, for example, an active partner in an ERA-AGE on ageing research in Europe and WORK-IN-NET on innovative work organisation.

The Swedish Council for Working Life and Social Research initiates and supports basic and applied research with a view to improving our knowledge about working life, public health and welfare.



The Swedish Council for Working Life
and Social Research (FAS)

Postal address: Box 2220,
SE-103 15 Stockholm

Visiting address: Westmanska
Palatset, Wallingatan 2, Stockholm

Telephone: +46(0)8 775 40 70

Fax: +46(0)8 775 40 75

E-mail: fas@fas.se

Website: www.fas.se

*Since 2001, Sweden has four main public
research-funding agencies:*

The Swedish Agency for Innovation Systems

www.vinnova.se

The Swedish Council for Working Life
and Social Research

www.fas.se

The Swedish Research Council

www.vr.se

The Swedish Research Council for Environment,
Agricultural Sciences and Spatial Planning

www.formas.se